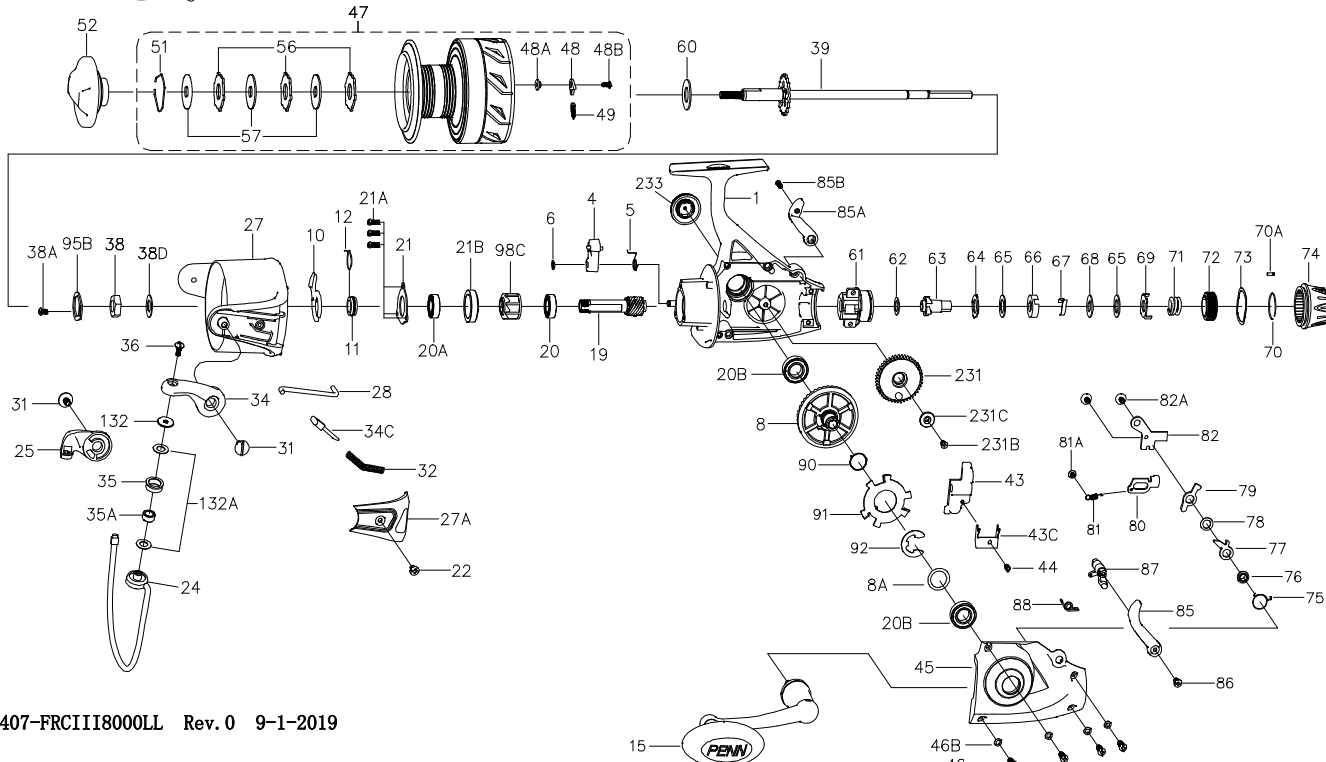




PARTS LIST FOR MODEL FRCIII8000LL



KEY NO.	PART NO.	PENN STYLE NO.	DESCRIPTION
46B	1191908	46B-5000SG	Housing Cover Washer (4 req)
47	1514354	47-FRCIII8000LL	Spool Assembly
48	1211625	48-5000SG	Click Tongue
48A	1211626	48A-5000SG	Click Tongue Washer
48B	1192658	22-2000SG	Bail Pivot Cover Screw
49	1211627	49-5000SG	Click Tongue Spring
51	1308112	51-CFT5000	Drag Retaining Ring
52	1514327	52-FRCIII8000	Drag Knob Assembly
56	1313883	56-CFT8000	Drag Washer (3 req)
57	1211646	57-7000BTL	Keyed Washer (3 req)
60	1211629	60-5000BTL	Thrust Washer
61	1371396	61-FRCII6000LL	Rear Drag Bracket
62	1371397	62-FRCII6000LL	Washer
63	1371398	63-FRCII6000LL	Ratchet
64	1371399	64-FRCII6000LL	Eared Washer
65	1371400	65-FRCII6000LL	Friction Washer (2 req)
66	1371401	66-FRCII6000LL	Click Spring Sleeve
67	1371402	67-FRCII6000LL	Click Spring
68	1371403	68-FRCII6000LL	Keyed Drag Washer
69	1371404	69-FRCII6000LL	Eared Washer
70	1371405	70-FRCII6000LL	Retaining Ring
70A	1371406	70A-FRCII6000LL	Click Pin
71	1371407	71-FRCII6000LL	Rear Drag Spring
72	1371408	72-FRCII6000LL	Drag Sleeve
73	1371409	73-FRCII6000LL	Spring Washer
74	1371428	74-FRCII8000LL	Rear Drag
75	1371372	75-FRCII4000LL	Release Pawl Spring
76	1371411	76-FRCII6000LL	Release Pawl Stud
77	1371429	77-FRCII8000LL	Release Pawl
78	1371413	78-FRCII6000LL	Washer
79	1371414	79-FRCII6000LL	Return Pawl
80	1371415	80-FRCII6000LL	N-R Pawl
81	1371376	81-FRCII4000LL	N-R Pawl Spring
81A	1324171	38A-BTLII4000	Rotor Locking Plate Screw
82	1371430	82-FRCII8000LL	Retaining Plate
82A	1371417	82A-FRCII6000LL	Screw (2 req)
85	1371431	85-FRCII8000LL	Left Lever
85A	1371432	85A-FRCII8000LL	Right Lever
85B	1371381	85B-FRCII4000LL	Screw
86	1251748	36-1000FRC	Bail Stud Screw
87	1371433	87-FRCII8000LL	Lever Bar
88	1371384	88-FRCII4000LL	Lever Spring
90	1371702	90-FRCII8000LL	Release Spring
91	1371434	91-FRCII8000LL	Release Plate
92	1371435	92-FRCII8000LL	Retaining Washer
95B	1308115	95B-CFT5000	Rotor Locking Plate
98C	1313884	98C-CFT8000	Clutch/Sleeve Assembly
132	1192298	132-7000SG	Roller Washer
132A	1192302	132A-3000SG	Line Roller Washer (2 req)
231	1313886	231-CFT8000	Crosswind Gear
231B	1313887	231B-CFT8000	Screw Crosswind Gear
231C	1313888	231C-CFT8000	Screw Crosswind Sleeve
233	1514320	233-FRCII15000	Bearing Cover Assy

407-FRCIII8000LL Rev. 0 9-1-2019

1505230

KEY NO.	PART NO.	PENN STYLE NO.	DESCRIPTION	KEY NO.	PART NO.	PENN STYLE NO.	DESCRIPTION
1	1514353	1-FRCIII8000LL	Housing Assembly	25	1313870	25-CFT8000	Bail Holder
4	1190939	4-7000SG	A/R Dog	27	1365755	27-FRCII8000	Rotor
5	1190966	5-5000SG	Dog Spring	27A	1365756	27A-FRCII8000	Bail Pivot Cover
6	1190979	6-5000SG	Retaining Clip	28	1365757	28-FRCII8000	Trip Lever
8	1371422	8-FRCII8000LL	Main Gear	31	1365758	31-FRCII8000	Bail Arm Screw (2 req)
8A	1191031	8A-7000SG	Shim	32	1313874	32-CFT8000	Bail Spring
10	1313864	10-CFT8000	A/R Holder	34	1313875	34-CFT8000	Bail Arm
11	1191087	11-7000SG	Bushing	34C	1191656	34C-7000SG	Pivot Arm
12	1313865	12-CFT8000	A/R Bushing Spring	35	1313876	35-CFT8000	Line Roller
15	1514325	15-FRCIII8000	Handle Assembly	35A	1313877	35A-CFT8000	Line Roller Bushing
19	1313868	19-CFT8000	Pinion Gear	36	1191704	36-7000SG	Bail Stud Screw
20	1204012	20-5000PUR	Lower Pinion Ball Bearing	38	1191731	38-7000SG	Rotor Nut
20A	1308090	20-CFT5000	Upper Pinion Ball Bearing	38A	1204016	21A-5000PUR	Bearing Retainer Screw
20B	1204068	20B-7000PUR	Housing Ball Bearing(2 req)	38D	1308104	38D-CFT5000	Rotor Nut Washer
21	1192636	21-5000SG	Bearing Retainer	39	1371424	39-FRCII8000LL	Main Shaft Assembly
21A	1192645	21A-5000SG	Bearing Retainer Screw (3 req)	43	1371425	43-FRCII8000LL	Crosswind Block
21B	1324209	21B-BTLII5000	Collar	43C	1371426	43C-FRCII8000LL	Main Shaft Holder
22	1204018	22-6000PUR	Bail Pivot Cover Screw	44	1192644	21A-3000SG	Crosswind Block Screw
24	1365754	24-FRCII8000	Bail Wire	45	1514574	45-FRCIII8000LL	Housing Cover Assy
				46	1371701	46-FRCII6000LL	Housing Cover Screw (4 req)